



R. P. ADAMS

A Subsidiary Of Service Filtration Corporation
P.O. BOX 963
BUFFALO, NEW YORK, 14240-0963
www.rpadams.com

phone 716-877-2608
fax 716-877-9385
phone 800-896-8869
email info@rpadams.com

February 19, 2014

City of Ocala, FL
Ocala, FL

Attention: To Whom it May Concern

Reference: Representative in the State of Florida
For SFC Adams, Inc. d/b/a R.P. Adams

This letter is to confirm that Chem-Quip, Inc., Lakeland, FL is the sole authorized representative in peninsular Florida for SFC Adams, Inc d/b/a R.P. Adams.

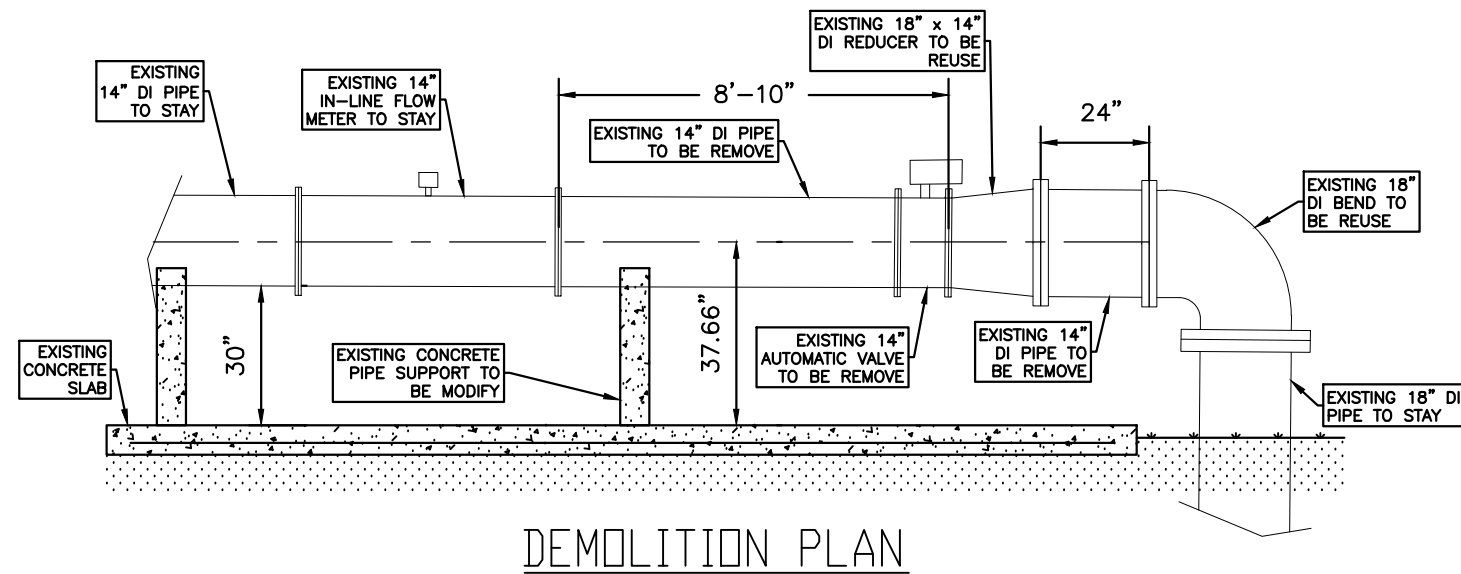
Chem-Quip represents all products manufactured by R.P. Adams, including but not limited to; Water Strainers, G.P. Filters, Aftercoolers and Separators.

If you have any questions, please contact us at 716-877-2608, by e-mail gcasolini@rpadams.com or via our website www.rpadams.com

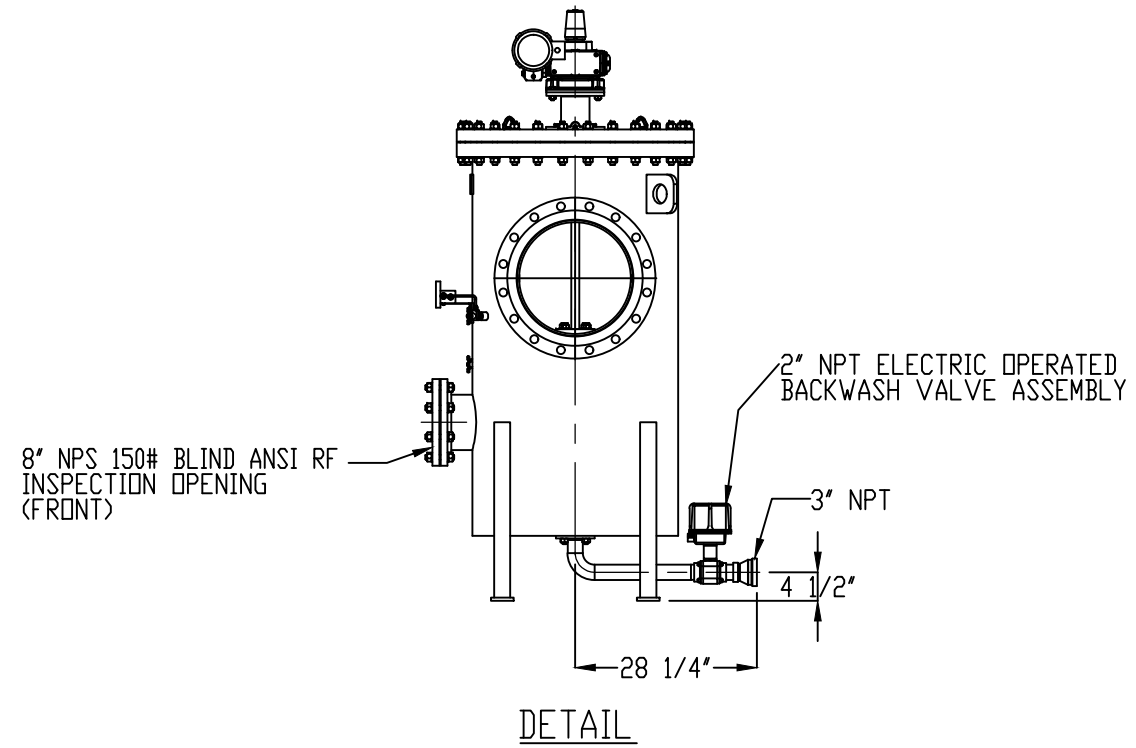
Best Regards,
R.P. Adams Company

Gian Marc Casolini
National Sales Manager

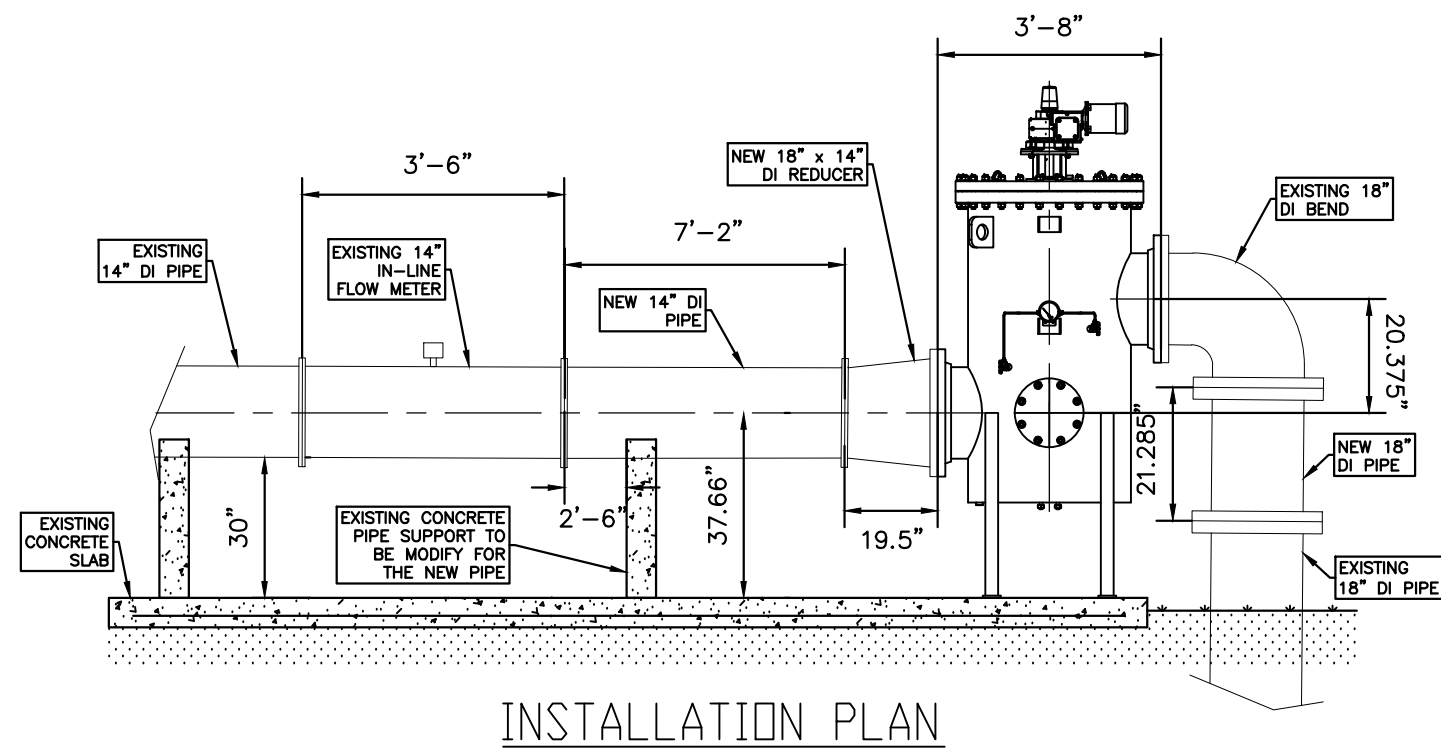
CC: Chem-Quip, Inc.
214 Hillcrest Street, Suite 2
Lakeland, FL 33815
Phone: (863) 687-8785



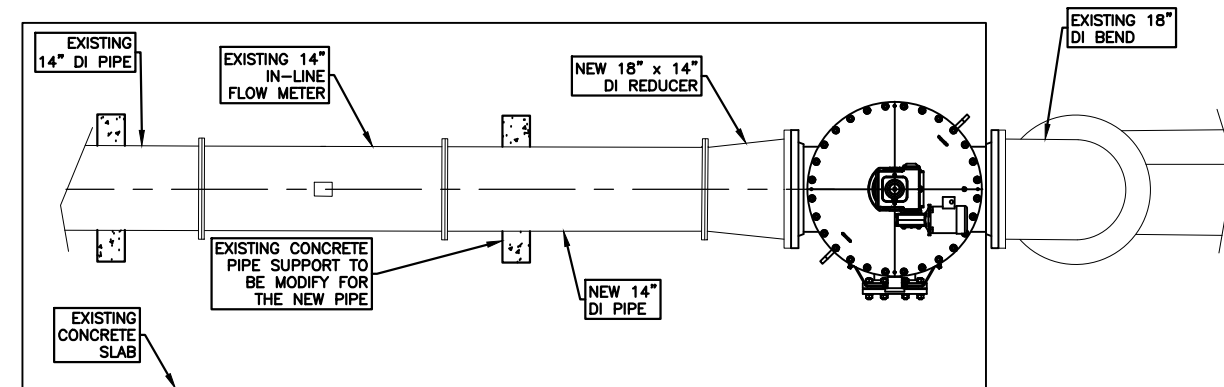
DEMOLITION PLAN



DETAIL



INSTALLATION PLAN



PLAN VIEW

SHEET DESCRIPTION: PLAN VIEW

PROJECT DESCRIPTION: WRF #3 PUBLIC ACCESS PUMP STATION IMPROVEMENT

DATE	REV. BY

HECTOR A. COLON, P.E.
Registered Engineer No. 84007
State of Florida, DATE: _____
Valid only with embossed seal.

PREPARED BY:

WATER RESOURCES/ENGINEERING DEPT

DRAWN BY:	H. COLON
DESIGNED BY:	H. COLON
HORIZ.:	N/A
VERT.:	N/A
PROJ. #:	18350-005
F.B. #:	N/A
DATE DRAWN:	2/22/18



R. P. ADAMS

P.O. BOX 963
BUFFALO, NEW YORK, 14240-0963
www.rpadams.com

phone 716-877-2608
fax 716-877-9385
phone 800-896-8869
email info@rpadams.com

March 9, 2018

City of Ocala Water Resources
120 NW 4th Avenue
Ocala, FL 34475

Attention: Luis Acosta

Reference: Automatic Backwash Strainer
Reuse Water System Upgrade
R.P. Adams Proposal M1714541 Rev 1

Thank you for your recent inquiry. After thorough review of the information provided the following equipment has been selected and is recommended for your application:

<u>Item 1:</u>	<u>Automatic Backwash Strainer</u>
Quantity:	1
R.P. Adams Model:	18" VWS-34 Poro-Edge Automatic Backwash Strainer
Description:	See Attachment A
Selling Price Each:	\$50,900.00 FOB Buffalo, NY

Freight:

Prices include LTL truck freight to Ocala, FL.

Options:

- A) Spare Parts: Add one (1) recommended spare parts kit including cover gasket, inspection opening gasket, shear key, seal plate O-ring(s), drive shaft packing, drive shaft O-rings, and a drive shaft gasket.
Price Addition: \$305.00 each
- B) Maintenance / Inspection Opening: Increase maintenance / inspection opening from 8" to 12".
Price Addition: \$500.00 each
- C) Davit: Add davit for cover removal. (Note: The price is for a rotating lifting arm only. The price does not include hoist and rigging.)
Price Addition: +\$2,538.00 each

Design Notes:

- 1) The proposed strainer requires minimum 25 psig inlet operating pressure in order for the automatic backwash to function properly. Please contact R.P. Adams if operating pressure is less than 25 psig.
- 2) The proposed strainer is R.P. Adams standard material of construction and design. Other materials of construction such as 316 SS, design & stamp per ASME Code, NEMA-4X electrical components, PLC-based controls, and other features are available. Please advise any specific requirements.



- 3) Automatic operation requires control panel with motor starter, differential pressure instrument, and automatic backwash valve. The automatic backwash operates intermittently, triggered by either high differential pressure or on a timed interval.
- 4) Anchor bolts shall be supplied by others and are not included as part of this proposal. Foundation design is by others.
- 5) The price includes start-up service consisting of Installation/Startup/Maintenance video and one visit by a factory trained representative to ensure the strainer is installed properly.
- 6) See attachment with Benefits of R.P. Adams Automatic Backwash Strainer.

Commercial Terms:

Prices are firm, valid thirty (30) days. Payment terms are net thirty (30) days, subject to credit approval. Freight will be Pre-pay and Add. Other terms in accordance with R.P. Adams Terms & Conditions.

Progress payments will be required. We propose payments as follows:

- 30% upon return of approved drawings with release for fabrication, net 30 days
- 70% upon shipment, net 30 days

Approval drawings will be submitted two (2) to three (3) weeks after receipt of order. Shipment will be ten (10) to twelve (12) weeks after return of approved drawings with release for fabrication. Please contact us if different lead time is desired.

We thank you for the opportunity to offer this proposal. Please contact us if you have any questions or if we can be of further assistance.

Very truly yours,
R.P. Adams

Michael Cataffo

Michael Cataffo
Regional Sales Manager

CC: Barry Bonnicksen
Chem-Quip Inc.
Phone: (863) 687-8785
chemquip.barry@verizon.net



Attachment A

Automatic Backwash Strainer

General Description:

R.P. Adams Model:	18" VWS-34	Poro-Edge Automatic Backwash Strainer
Inlet/Outlet Size:	18"-150#	Orientation: Vertical
Capacity:	8,400	USGPM @ 2 PSID Clean Differential Pressure
Design Pressure:	150	PSIG per: R.P. Adams Standard
Size Solids Removed:	0.005"	Slot Opening
Estimated Weight:	3,290	Pounds (empty)

Design Operating Conditions:

Flowrate:	5,556	GPM (8 MGD)
Operating Pressure:	70	PSIG
Desired Solid Removal:	0.005	Inch

Materials of Construction & Features:

Strainer Shell:	Carbon Steel, Epoxy-Lined
Strainer Cover:	Carbon Steel, Epoxy-Lined
Internal Backwash Assembly:	304 Stainless Steel with Bronze Seal Plate
Reverse Wrap Poro-Edge Tubes:	304 Stainless Steel
Tube Sheet:	Cast Ductile Iron
Internal Fasteners:	316L Stainless Steel
Gaskets:	EPDM
Pressure Ga., Tubing, & Fittings:	Copper Alloy
Guide Bearing Internal:	Delrin
Strainer Surface Area:	51.2 square feet
Strainer Open Area:	5.12 square feet
Speed Reducer:	Winsmith Double Reduction
Backwash Drive Motor:	1/2 HP TEFC; 3 Ph / 60Hz / 460 VAC

Automatic Backwash Controls:

The following controls are included:

- Control Panel: One (1) NEMA-4 control enclosure, containing IEC magnetic motor starter, thermal overloads, adjustable backwash duration timer, adjustable backwash initiation timer, hand/off/auto selector switch, pilot run light, control circuit fuse, and control voltage transformer, if needed.
(Note: Control panel ships loose for installation and wiring by customer.)
- Differential Pressure Switch: One (1) Barksdale Model CDPD-2H, rated NEMA-4, mounted on strainer complete with tubing and fittings, with dual settings for backwash initiation and high differential pressure alarm.
- Backwash Valve: One (1) 2" NPT brass body ball valve with NEMA-4 electric actuator, Worcester or equal.



BENEFITS OF R.P. ADAMS AUTOMATIC SELF-CLEANING STRAINERS

Our Poro-Edge Automatic Self-Cleaning Strainers offer many benefits to customers who select this proven design for their automatic straining requirements. These benefits include:

1) EASE OF INSTALLATION:

Automatic strainers are offered in multiple configurations to provide the most flexibility to fit into the installed location. In most cases, the strainer can be furnished in either a vertical or horizontal design, and the inlet and outlet connections can be rotated on the strainer body to accommodate installation requirements. The horizontal configuration often offers an advantage when headroom is limited. The horizontal strainer also eases maintenance tasks, as serviceable items are conveniently located at chest height instead of a higher elevation, as would be the case for vertical strainers.

2) PORO-EDGE STRAINER MEDIA:

All R. P. Adams strainers use Poro-Edge straining media. This cylindrical wedge-wire media provides the largest straining area (dirt-holding capacity) of any automatic water strainer. This open area is a measure of the strainer's ability to collect solids over a longer period of time before backwashing is required. Poro-Edge media, having a smaller diameter than one large strainer basket, can safely handle differential pressures in excess of 150 PSIG, collapse or burst. This guarantees continuous filtration protection of your process stream and will NEVER allow solids from getting downstream of the strainer. Large basket strainer designs are subject to collapse and catastrophic failure, especially with high differential pressures.

3) GREATER SOLIDS HOLDING CAPACITY:

Our multi-tube strainer design offers more surface area than a single large basket, which enables the unit to operate at longer intervals without having to be cleaned. This reduces wear and tear on the equipment, which minimizes maintenance costs. In addition, the amount of backwash volume is significantly reduced. The greater effective straining area also provides protection against upset conditions with high flow or solids loading that may plug other strainer designs. This is significant, as automatic strainers, by design, are intended to function without operator attention.

4) LOWER OPERATING COSTS:

With the greater surface area in a multi-tube strainer design, the pressure drop across the strainer is lower. Strainers are sized to operate at a clean pressure drop less than 2 PSID. By design, R. P. Adams Poro-Edge water strainers will operate at the clean pressure drop until 75% of the open area in the tubes contains collected solids. This significantly reduces pumping costs and minimizes operating expenses, especially for electricity.

5) GUARANTEED PROTECTION AGAINST MEDIA BREAKAGE:

The cleaning mechanism on the R. P. Adams strainer never comes in contact with the strainer media. They are separated by a substantial tubesheet. There is no possibility of element damage caused by large solids jamming the backwash mechanism. This guarantees that the media will never be damaged from solids or debris. Large basket type designs have the cleaning mechanism sweep across the strainer media: Solids sometimes lodge between the cleaning mechanism and the strainer media and cause media damage.

6) CHOICE OF LEVEL OF SEPARATION:

R.P. Adams offers a wide variety of levels of separation to choose from. Standard strainer elements are available from 25 microns (0.001") openings up to 1/8" openings. You can be sure that we offer a strainer that will meet your needs.

7) PRODUCT SUPPORT:

R.P. Adams maintains a large inventory of spare parts, often available for immediate shipment. Start-up and maintenance video tapes, in VHS format (English language only), are included in our quoted selling price.



R. P. ADAMS TERMS AND CONDITIONS OF SALE

(DOMESTIC)

1. Terms of payment 30 days net, payable in U.S. dollars, free of expense to us for collecting charges.
2. The Equipment furnished by us under this contract is understood to be built for the particular conditions of service stated herein and the contract is not subject to cancellation.
3. Performance on the Company's part under this contract is subject to delays due to fires, strikes, or other causes beyond our control and the receipt of the equipment by the Purchaser shall constitute its acceptance of delivery.
4. It is expressly agreed that any and all verbal or written agreements or understandings made prior to the date of approval of this contract, and not contained herein are hereby cancelled, that no agent or representative has any authority to obligate this Company by any terms, stipulations or promises not contained in this contract and approved in writing by the Company.
5. The title and right of possession of all equipment sold under this contract remains in the Company whatever may be its mode of attachment to realty, until the full purchase price has been paid in cash to the Company. The Purchaser agrees to protect the interests of the Company in case of damage and to carry insurance or assume all loss resulting from fire through failure to carry said insurance.
6. The Company guarantees the equipment of its manufacture to be free of latent defects in material and workmanship, and should any part be found within one (1) year from date of shipment to have been defective at time furnished, the Company will repair or replace said part without charge f.o.b. our plant.
7. No Federal, State or other special tax is included; and any such tax, if imposed, is to be added to the contract price herein stated.
8. This proposal is for immediate acceptance and is subject to change or withdrawal without notice.
9. Lead time for shipment shall commence from receipt of all necessary manufacturing information.

R.P. ADAMS	SM-9819
BUFFALO, NEW YORK 14240	10/8/2004